



Mounting Instructions For Automotive GPS Receivers

This instruction sheet describes how to assemble and use the quick-release flexible suction cup mount for Lowrance® automotive GPS receivers. The flexible suction cup mount is useful for mounting on glass or other smooth surfaces.

These mounts allow you to make non-mar installations without drilling, screws or permanent adhesives. And, since each mount is portable, it's easy to transfer the GPS unit to another vehicle.

WARNING!

When a GPS receiver is used in an automobile the driver is solely responsible for operating the vehicle in a safe manner. Drivers must maintain full surveillance of all pertinent driving conditions at all times.

An accident or collision resulting in damage to property, personal injury or death could occur if the operator of a GPS-equipped vehicle fails to pay full attention to travel conditions and vehicle operation while the vehicle is in motion.

Do not attempt to configure, adjust or enter information into your GPS unit while driving.

When mounting a GPS unit in an automobile you must avoid any installation that obscures important instruments and controls or restricts the driver's view through the vehicle's windows.

Avoid placing the GPS where it could be propelled by an activated airbag. Some states restrict mounting any electronic device in any location on an automobile dash. Be sure to check your local laws before using these mounts.

Be sure to check the suction mount for adequate adhesion each time you use the unit and reinstall it if necessary.

This is a portable mounting device and the normal heating and cooling cycle of a car's interior will eventually

loosen the seal. A loose suction cup could allow the unit to fall or come loose during vehicle operations.

The iWAY package includes a flexible arm mount. The base and arm can be adjusted to a position that best suits your vehicle.



Mounting bracket packed with the iWAY™ 350c GPS receiver.

Installing the flexible suction cup mount

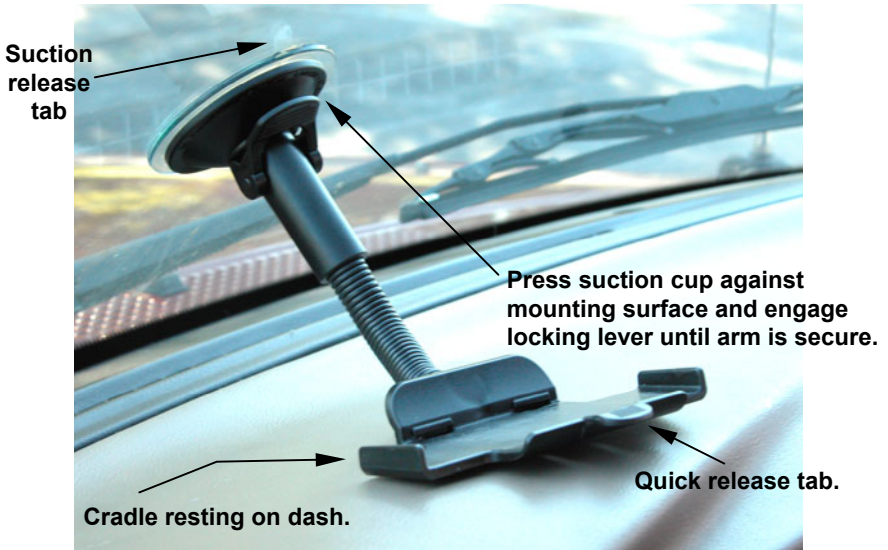
The suction cup mount is designed to secure the GPS as it rests on another surface. It is *not* designed to hold the unit suspended by the suction cup alone. The photo below shows how a GPS unit should be supported by the suction mount *and* another surface, which in this example is a dashboard.



iWAY™ 350c resting on dash with suction cup mount.

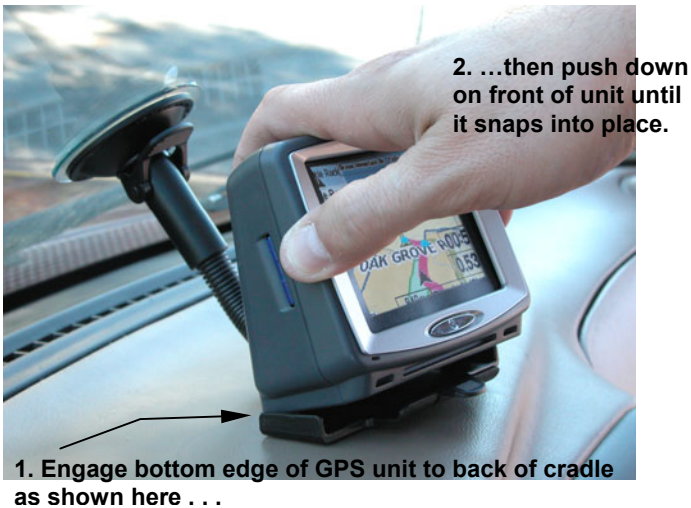
The mounting surface should be free of dirt and oil. Press the suction

cup against the mounting surface and, while maintaining pressure, push the locking lever down until the arm is secure.



Suction cup base secured to windshield.

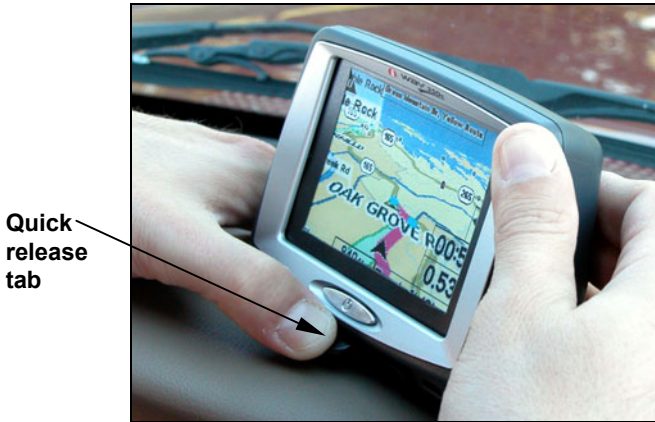
Mounting the unit is easiest if you first engage the bottom back edge in the cradle (see following photo). After the bottom of the GPS unit is in the cradle, push down on the front of the unit until it snaps into place.



Steps for attaching unit to mount.

Another option is to place the GPS unit in the cradle *before* attaching the suction cup and arm to the mounting surface. Simply choose which option works best for you.

To dismount the unit, push the quick release tab on the front of the cradle down (see following photo). To remove the suction cup base, disengage the locking lever and pull on the suction release tab to break the vacuum seal.



Push quick release tab to dismount unit.

If the suction cup mount has problems staying on, clean the mounting surface and the suction cup with alcohol, then reinstall. Moistening the suction cup may help adhesion in some cases.

Storage Issues

Caution:

Do not leave this unit unattended on an automobile dashboard. When your car is parked and the GPS is not in use, protect it from theft and heat by storing it in an unobtrusive location away from direct sunlight.

In warm seasons the temperature on a car's unventilated or non air-conditioned dash can become hot enough to prevent the GPS unit from operating.

Long Term Storage

When the GPS is not in use for an extended period of time we recommend bringing it indoors and storing it at room temperature or in some location with a temperature range of 60° to 90° F.



iWAY™ 350c centered on a dashboard. This photo was taken at passenger eye level. Notice how the unit was placed so that it does not obstruct the view of the road ahead through the windshield.

See your Lowrance dealer or visit the LEI web site, **www.lei-extras.com**, for the latest options stocked by LEI; the accessory source for Lowrance and Lowrance Automotive.

If you have questions contact us at the following phone numbers: In the U.S., call LEI Extras toll-free at 800-324-0045, 8 a.m. to 4 p.m. Central Standard Time, M-F. In Canada, call toll-free 800-661-3983, 8 a.m. to 5 p.m. Eastern Standard Time, M-F.

If you live outside the U.S. and Canada, you should contact the dealer in the country where you purchased your unit. To locate a dealer near you, visit the Lowrance web site, **www.lowrance.com**, and look for the Dealer Locator.

Pub. 988-0148-992

Printed in USA 102605

© Copyright 2005
All Rights Reserved
LEI